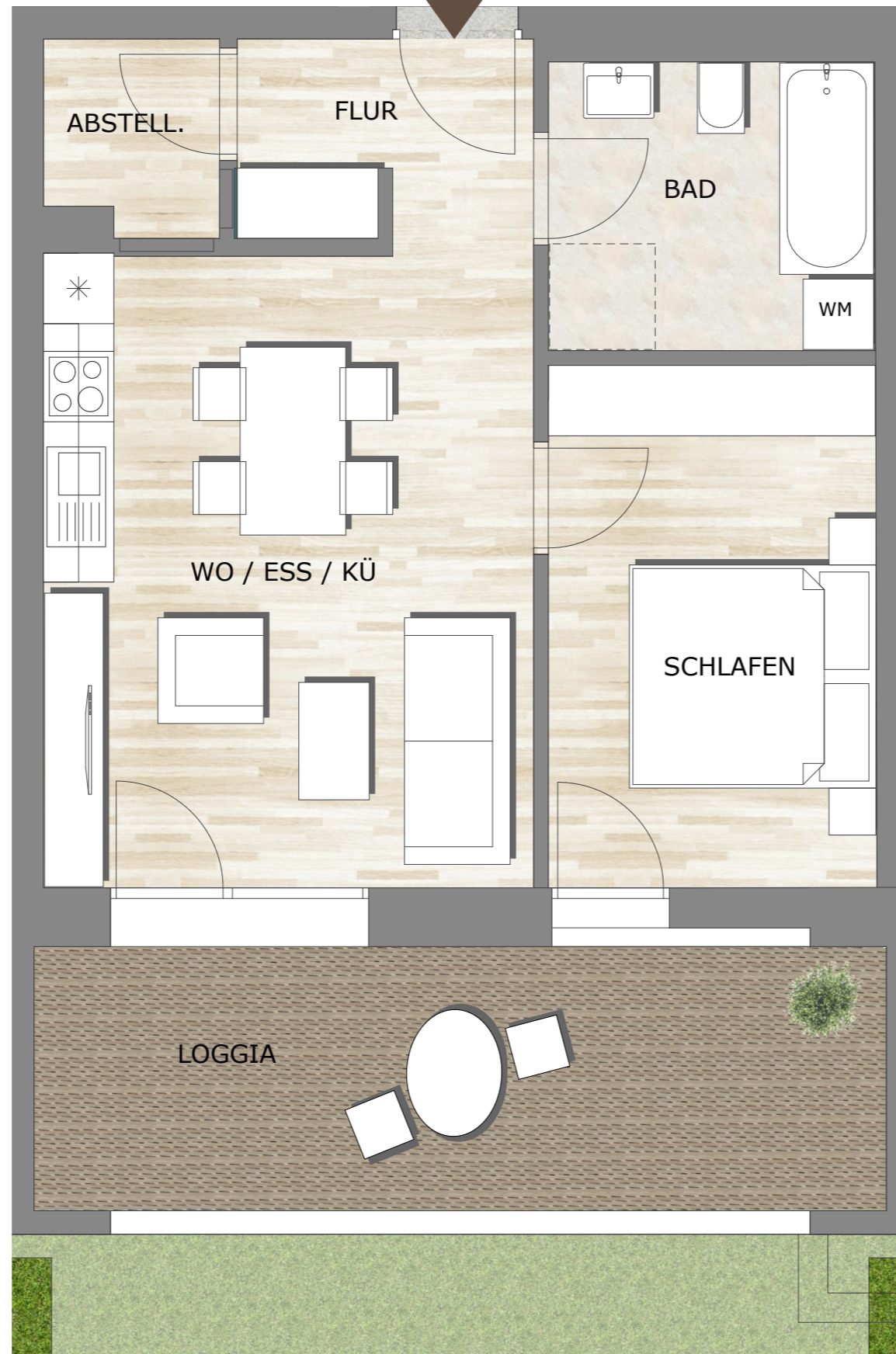


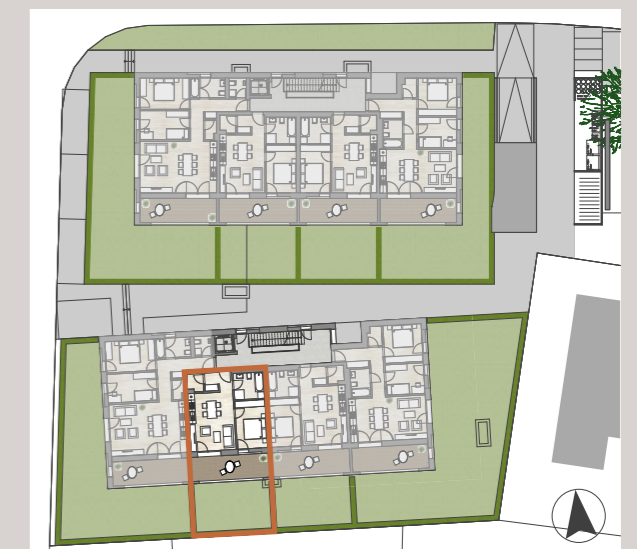
TOP B-00-02 / 2-ZI / 48,55m<sup>2</sup>



Öpflbutzga

## Öpflbutzga | Haus B

ERDGESCHOSS



|                    |                           |
|--------------------|---------------------------|
| <b>TOP B-00-02</b> | <b>48,55m<sup>2</sup></b> |
| WO / ESS / KÜ      | 22,46m <sup>2</sup>       |
| FLUR               | 4,40m <sup>2</sup>        |
| SCHLAFEN           | 12,46m <sup>2</sup>       |
| ABSTELLR.          | 2,39m <sup>2</sup>        |
| BAD                | 6,84m <sup>2</sup>        |
| LOGGIA             | 16,40m <sup>2</sup>       |
| GARTEN             | 31,28m <sup>2</sup>       |

Sägerstraße, 6833 Klaus  
Planstand 07.04.20



Mst. 1:50



1m

Ansprechpartner:  
Hajek Riedmann Wohnbau GmbH  
Torkelweg 1, 6832 Röthis  
Sandro Barbisch | T +43 676 344 79 86

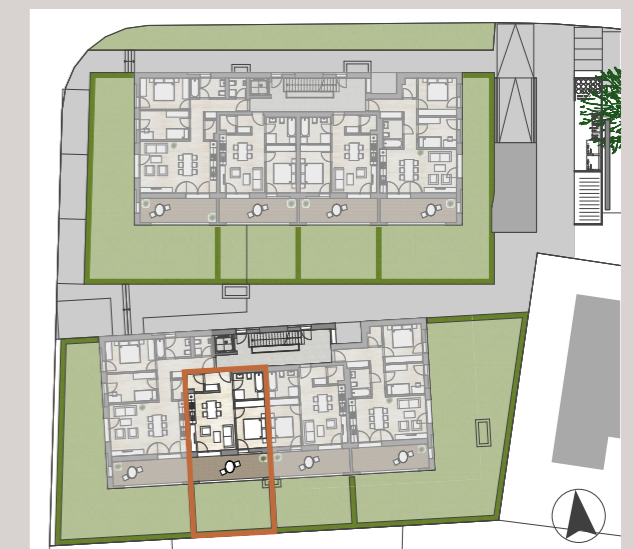




Öpflbutzga

## Öpflbutzga | Haus B

ERDGESCHOSS



|                    |                           |
|--------------------|---------------------------|
| <b>TOP B-00-02</b> | <b>48,55m<sup>2</sup></b> |
| WO / ESS / KÜ      | 22,46m <sup>2</sup>       |
| FLUR               | 4,40m <sup>2</sup>        |
| SCHLAFEN           | 12,46m <sup>2</sup>       |
| ABSTELLR.          | 2,39m <sup>2</sup>        |
| BAD                | 6,84m <sup>2</sup>        |
| LOGGIA             | 16,40m <sup>2</sup>       |
| GARTEN             | 31,28m <sup>2</sup>       |

TOP B-00-02 / 2-ZI / 48,55m<sup>2</sup>



Mst. 1:100



1m

Sägerstraße, 6833 Klaus  
Planstand 07.04.20

Ansprechpartner:  
Hajek Riedmann Wohnbau GmbH  
Torkelweg 1, 6832 Röthis  
Sandro Barbisch | T +43 676 344 79 86

